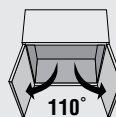


CLIP TOP BLUMOTION HINGE

- Hinge with larger overlay capacity for thick cabinet sides
- CLIP top BLUMOTION with integrated BLUMOTION (with deactivation option)
- CLIP top with or without closing mechanism (spring)
- All metal hinge, nickel plated
- 110° opening angle
- 3-dimensional front adjustment
- Convenient spiral-tech depth adjustment
- Tool-free door to cabinet assembly and removal
- With INSERTA tool-free hinge to door assembly

Planning

Hinge dimensions and gap calculation based on factory setting (mounting plate spacing = 0 mm). Hinge and door protrusion at full opening angle.

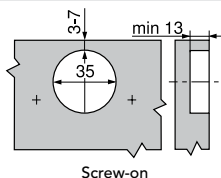


Sold by unit

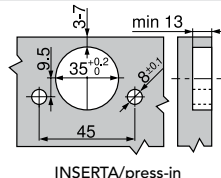
PRODUCT	FIXING TYPE	QTY/BOX
73B358180	Dowels	250
73B359180	Inserta	
New! 73B358E180	Pre-mounted Expando dowels	
73B355180	Screw-on	

Minimum gap (F) for fronts with a front radius (R = 1 mm) based on the factory setting

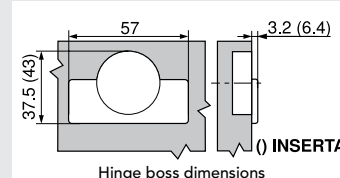
Drilling distance TB		Front thickness FS											In these cases a trial is recommended
		16	18	19	20	21	22	23	24	25	26	28	30
3	0.5	0.8	1.0	1.2	1.5	1.8	2.2	2.7	3.5	4.3			
4	0.5	0.8	1.0	1.2	1.4	1.7	2.0	2.5	3.1	3.8			
5	0.5	0.8	0.9	1.2	1.4	1.7	2.0	2.4	2.9	3.4			
6	0.5	0.8	0.9	1.2	1.3	1.6	1.9	2.3	2.7	3.2			
7	0.5	0.8	0.9	1.1	1.3	1.6	1.9	2.2	2.6	3.0			
Additional for + 2 mm side adjustment		+ 0.2	+ 0.4	+ 0.4	+ 0.5	+ 0.5	+ 0.5	+ 0.5	+ 0.5	+ 0.5			



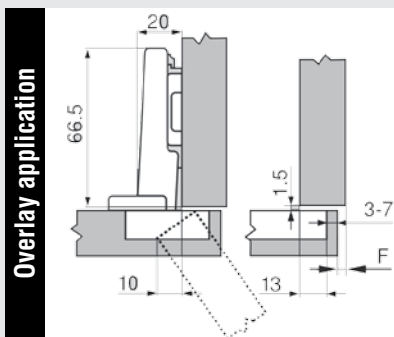
Screw-on



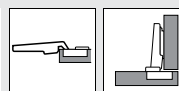
INSERTA/press-in



Hinge boss dimensions



Overlay application



Drilling distance		Front overlay																
		-	7	8	9	10	11	12	13	14	15	16	17	18	19	20		
0													3	4	5	6	7	
3									3	4	5	6	7					
6						3	4	5	6	7								
9			3	4	5	6	7											
Mounting plate																		

CLIP TOP BLUMOTION 110° HINGES

Sold by unit

PRODUCT	FINISH	FIXING TYPE	OVERLAY	QTY/BOX
71B355181	Black onyx	Screw-on	Full overlay	250
71B359181		Inserta	Half overlay	
71B369181			Inset	
71B379181				



CLIP TOP BLUMOTION 95° HINGES FOR THICK DOOR

Soft-close mechanism

Sold by unit

PRODUCT	FINISH	FIXING TYPE	OVERLAY	QTY/BOX
71B959181	Black onyx	Inserta	Full overlay	250
71B969181			Half overlay	50
71B979181			Inset	



HORIZONTAL CAM MOUNTING PLATES (SCREW-ON) - 0MM

Sold by unit

PRODUCT	FINISH	FIXING TYPE	QTY/BOX
175H310181	Black onyx	Screw-on	500
174H710181		Expando	



175H310181

HINGE COVER CAPS

Can also be used for angled, mini and glass door hinge

Sold by unit

REF.	PRODUCT	FINISH	DESCRIPTION	QTY/BOX
A	701553181	Black onyx	Straight-arm and cranked-arm hinge cover cap	1000
	701503181	Black onyx	Standard straight arm hinge cover cap	
B	701663181	Black onyx	Straight-arm and cranked-arm hinge cover cap	
C	70T3504181	Black onyx	Clip top BLUMOTION cover cap	



A



B



C

FREELIGHT OPENING MECHANISM

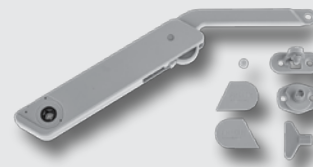
The new FREELight is a versatile lifter that can be used together with widely available flap or door hinges. FREELight is capable of lifting and lowering front panels on wall units and other high units. The front panels can weigh between 2 to 23 lb (0.9 to 10.5 kg). They can measure between 10 13/16" to 23 5/8" (275 to 600 mm) when used with a 90° angle.

- Simple, tried, and tested technology
- High-quality appearance
- Simple assembly
- Can be installed on right or left side

Application: Ideal for kitchens and living rooms

Included: 1 FREELight fitting, 1 right cover cap, 1 left cover cap, 1 front connector (for wood or euro screws), 1 carcass connector (for wood or euro screws), 1 adjustment key

PRODUCT	FINISH	LOAD CAPACITY	QTY/BOX
272032100	Gray	1.54 to 6.17 lb (0.7 to 2.8 kg)	1
27203230	White		
272033100	Gray	2.65 to 9.48 lb (1.2 to 4.3 kg)	
27203330	White		
272035100	Gray	4.85 to 15.7 lb (2.2 to 7.1 kg)	
27203530	White		



PUSH TO OPEN MAGNETIC LATCH PISTON WITH PLATE FOR FREELIGHT

- Drilling depth: 40 mm
- Drilling diameter: 10 mm

PRODUCT	DRILLING DEPTH	DRILLING Ø	QTY/BOX
272038	1 9/16" (40 mm)	3/8" (10 mm)	10



MAGNETIC LATCH ADAPTER FOR FREELIGHT

PRODUCT	QTY/BOX
272040	10

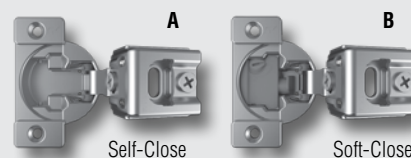


RFF SERIES - COMPACT FACE FRAME HINGES

The RFF series is available as a self-close mechanism and as a patented progressive soft-closing mechanism technology to eliminate doors from slamming.

- Fast assembly
- Wrap-a-round fixation
- 2 cams
- 6-way adjustments
- KCMA approved

REF.	PRODUCT	FIXING TYPE	OVERLAY	CLOSING	QTY/BOX
A	RFF30120050	Screw-On	1/2" (13 mm)	Self-Close	300
	RFF30120058	Dowels			
	RFF31140050	Screw-On	1 1/4" (32 mm)		
	RFF31140058	Dowels			
B	RFF30120040	Screw-On	1/2" (13 mm)	Soft-Close	300
	RFF30120048	Dowels			
	RFF31140040	Screw-On	1 1/4" (32 mm)		
	RFF31140048	Dowels			



KIMANA HINGES FOR LIFT-UP AND DOWNWARD DOORS

Kimana hinges are designed to open and close flap and drop-down doors.

With a unique, exclusive movement design, it opens vertical cabinet doors even when the cabinet bottom rests on another panel or the cabinet top is topped with a decorative or lighting panel.

- The minimum panel thickness for the installation of a Kimana hinge is 6/8" (18 mm)
- For installation on panels of 5/8" (16 mm), use the adapter #11116180 or 11116190
- Minimal dimensions (Ø 26 mm boring for both the door and the bottom) as well as a minimalistic and elegant design contribute to making Kimana a functional hinge that is unique in its class
- Perpendicular mounting screws allows Kimana to be precisely positioned and makes it perfect for aluminum profiles.
- Kimana can easily be adjusted through the screws (PZ2) which are hidden underneath the cover. Different combinations of door and cabinet thicknesses can be created by adjusting Kimana (for thicknesses of 6/8" (18 mm), 3/4" (19 mm), and 25/32" (20 mm) or by placing adapters (for panel thicknesses of 16 mm) under the hinge clip to ensure perfect movement and alignment of the door

Included:

- 4 perpendicular mounting screws
- Adapter for 11/16" and 13/16" (18 mm and 21 mm)
- Instructions

Sold by unit

Specifications:

- Depth adjustment:
0 to 3/32" (0 to 2 mm)
- Lateral adjustment:
0 to 1/32" (0 to 1 mm)
- Vertical adjustment:
0 to 3/32" (0 to 2 mm)
- Locking system
- Standard drilling diameter:
1 1/32" (26 mm)
- Minimal depth: 19/32" (15 mm)
- The Kimana hinge installs without adapter on a door and cabinet panel that has a thickness of 6/8" to 25/32" (18 mm to 20 mm)



PRODUCT	FINISH	PANEL THICKNESS	DRILLING Ø	QTY/BOX
11125090	Black	6/8" (18 mm)	1 1/32" (26 mm)	150
11125905	Graphite			
11125180	Nickel			



New!

ADAPTERS FOR 5/8" (16 MM) PANEL - KIMANA HINGE

Sold by unit

PRODUCT	FINISH	PANEL THICKNESS	QTY/BOX
11116190	Black	5/8" (16 mm)	100
11116905	Graphite		
11116180	Nickel		



New!

Suggested product(s):

PRODUCT	DESCRIPTION
11125XXX	Kimana hinge for lift-up and downward doors

